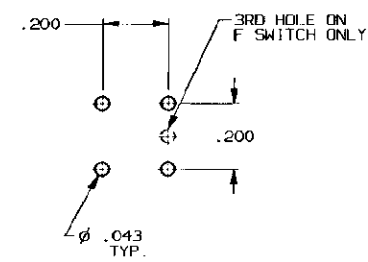
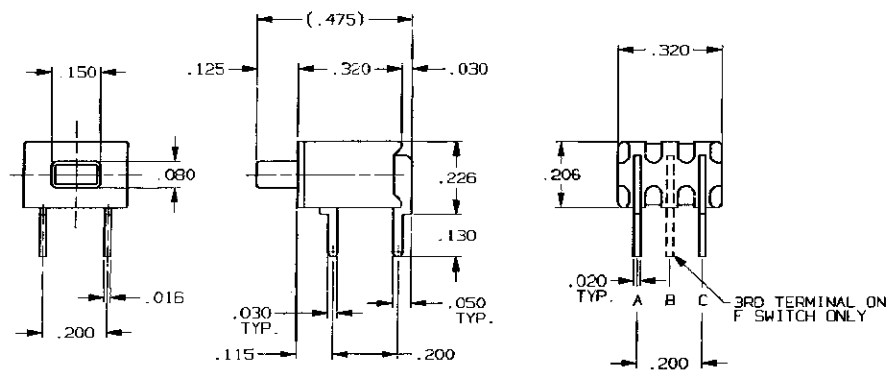


CONVERSION CHART	
INCH	MM
.002	0.05
.010	0.25
.016	0.41
.020	0.51
.030	0.76
.043	1.09
.050	1.27
.080	2.03
.115	2.92
.125	3.18
.150	.130
.200	5.08
.206	5.23
.226	5.74
.320	8.13
.475	12.07



RECOMMENDED HOLE LAYOUT
 TOLERANCE $\pm .002$ UNLESS OTHERWISE NOTED

SPECIFICATIONS:

MATERIALS:
 CASE: HIGH TEMPERATURE POLYESTER, UL 94V-0.
 ACTUATOR BUTTON: THERMOPLASTIC. COLDRS: SEE CHART BELOW.
 MOVING CONTACT: COPPER ALLOY, GOLD PLATED OVER NICKEL.
 FIXED CONTACT: COPPER ALLOY, GOLD PLATED OVER NICKEL.
 TERMINALS: COPPER ALLOY, TIN LEAD PLATED.
 TERMINAL SEAL: SP EPOXY
 DP EPOXY OPTIONAL.

ELECTRICAL:
 CONTACT RATING: GOLD = 0.4 VA MAX. @ 20 VDC OR PEAK AC.
 INITIAL CONTACT RESISTANCE: 20 MILLIOHMS MAX.
 INSULATION RESISTANCE: 1,000 MEGOHMS @ 500 VDC MIN.
 DIELECTRIC STRENGTH: 1,000 VAC @ SEA LEVEL.
 LIFE EXPECTANCY: GOLD: 1 POLE = 100,000 CYCLES
 2 POLES = 80,000 CYCLES.

MECHANICAL:
 ACTUATION FORCE: TP11CG-RA: 9 oz (.26 Kg)
 TP11FG-RA: 12 oz (.34 Kg).
 ACTUATION TRAVEL: .030 APPROX.

ENVIRONMENTAL:
 OPERATING TEMPERATURE: -22°F TO +149°F (-30°C TO +65°C).
 STORAGE TEMPERATURE: -22°F TO +149°F (-30°C TO +65°C).

NOTES:

1. INTERPRET DRAWING PER ASME Y14.5M-1994.
2. FORMERLY TPB11CG-RA.

(*)	COLOR
0	BLACK
2	RED
6	BLUE

MODEL NUMBER	ACTION	CONTACTS	
		FREE BUTTON	DEPRESSED BUTTON
TP11CG-RA(*)	SPST NORMALLY OPEN	NONE	A TO C
TP11FG-RA(*)	SPDT MOMENTARY	B TO A	B TO C (MOM)



OUTLINE DRAWING
 SPECIFICATIONS ARE SUBJECT TO CHANGES WITHOUT NOTICE

REV	REVISIONS
A	PER OG3C-0173-02 APD-MZ 03OCT02

TOLERANCES (EXCEPT AS NOTED)
 ANGULAR - ±1°
 DECIMAL .XX = ±.010
 DECIMAL .XXX = ±.010
 DECIMAL .XXXX = ±.010

AVGAT CONFIDENTIAL
 This document contains information which is the exclusive property of Avget Inc.
 Distribution, reproduction or use by others is not permitted without the expressed written consent of Avget Inc.

UNLESS OTHERWISE SPECIFIED DIMENSIONS ARE IN INCHES DO NOT SCALE PRINT	ORIGINAL DATE OF DRAWING: 7-9-77
FILE NAME: 401310UT	DIRECTORY: T1N5TGH
DRAWN: B. BUCKHEIT	DATE: 7-9-77
CHECKED: F. D. KIRCHOFF	DATE: 7-9-77
APPROVED: F. D. KIRCHOFF	DATE: 7-9-77
CODE IDENT. NO. 91506	DWG. SIZE C
SEE SPECIFICATIONS	NEXT ASSY:

TYCO ELECTRONIC!	
TITLE: OUTLINE DRAWING PUSHBUTTON SWITCH TP11CG/FG-RA(*)	
DWG. NO. 1437571-8	REV. A
PRODUCT CODE: BSL	SCALE: SHEET 1 OF 1